

**Minimo**<sup>®</sup>  
**ONE**  
**S** ERIES  
**Ver. 2**

MINI BELTSANDER

BS312

OPERATION MANUAL

A combination of C2212 conforms to EN specification

EN60745-1、EN60745-2-3

EN61000-6-4、EN61000-4-2、EN61000-4-3、EN61000-4-4

EN61000-4-5、EN61000-4-6、EN61000-4-8、EN61000-4-11

**MINITOR CO., LTD. JAPAN**

21-1 Ryogoku 3-chome, Sumida-ku, Tokyo 130-0026 JAPAN

Phone +81 3 (6630) 5800 FAX +81 3 (6630) 5795

Products are subject to change without notice.

## Introduction

Thank you very much for purchasing Minimo ONE Series Ver. 2 MINI BELTSANDER.

This product is the Motor for Minitor Handpieces. Read carefully this instruction manual before use. Also read carefully the instruction manuals of D.C. power pack, and of foot switch. Please keep this instruction manual near the power pack for any operators to refer to whenever operating this system. If you lost your instruction manual, download it from our website.

### Cautions for handling and operation

- Read the precautions below to ensure safe use and handling. These precautions are intended to protect you and others around you. Read and follow them carefully to avoid injury, damage to the product or damage to property.
- Read carefully the instruction manual of this power pack, handpieces and foot switch.
- Keep this instruction manual near the power pack for any operators to refer to whenever operating this system.

#### ■ About Symbols

The symbols below have the following meanings.



This symbol denotes that an instruction must be obeyed at all times.



This symbol denotes that the action is prohibited.

#### ■ About Warning and Caution

Safety instructions are classified as Warning and Caution in accordance with the seriousness of the risk.



#### Warning

This indicates that incorrect operation presents significant danger of accident, resulting in death or serious injury to users.



#### Caution

This indicates that incorrect operation presents possibility of injury to users or damage to the unit.

### Warning

- When connecting this handpiece with a powerpack, always turn off the main switch of the powerpack.

○ Failure to do so could result in fire, electric shock, and/or failure.

- Do not use a damaged curl cord.

○ Failure to do so could result in fire, electric shock, and/or failure.

- When turning on the motor switch, firmly hold the handpiece.

○ Failure to do so could make the handpiece hop, resulting in injury to the user or damage to the tool.

- Commutation sparks occur while the motor is running.

So, do not use near inflammable and/or explosive substances such as thinner and/or gasoline.

○ Failure to do so could result in fire and/or failure.

- Do not touch the Belt and pulley while the motor is running.

○ Failure to do so could result in injury to the user or damage to the tool.

- Always wear safety glasses and a mask for dust.

○ Chips and/or dust left after grinding/polishing process could result in unexpected injury.

- Make sure whether or not the handpiece runs after switching on.

If the handpiece does not run after switching on, stop using it.

○ Failure to do so could cause the motor to be overheated, resulting in fire or failure.

### Warning

- In case of abnormal noise, smoke, and/or bad smell, turn off the main power and unplug the power cord.

○ Failure to do so could result in fire and/or electric shock.

- Do not modify and/or disassemble the power pack.

○ Failure to do so could result in fire, electric shock, and/or failure.

○ Also this may have a significant impact on its safety and performance.

- Always ask us for repair.

○ Failure to do so could result in fire, electric shock, and/or failure.

○ Also this may have a significant impact on its safety and performance.

### Caution

- Use the power pack in a place without condensation.

○ Failure to do so could result in fire, electric shock, and/or failure.

- Use in temperature between 0 - 40°C.

○ Failure to do so could result in malfunction and/or failure.

- Do not use in a place near machines remarkably emitting electric noise.

○ Failure to do so could result in malfunction and/or failure.

- For maintenance, unplug the power cord for safety.

○ Failure to do so could result in electric shock and/or failure.

- Do not drop and/or hit.

○ Failure to do so could result in malfunction and/or failure.

- Do not use in a place with corrosive gas such as chlorine gas, hydrogen sulfide, and/or sulfurous acid gas.

○ Failure to do so could result in fire, electric shock, and/or failure.

- For disposal of this power pack, please follow your local city office or the shop where you purchased the product.

- Do not allow children to use this product. Also, keep away from children.

- When you leave the workshop, turn off the main switch, and unplug the power cord from the outlet for safety.

- Be careful for dust, oil, water not to enter the inside of the power pack.

If entering, turn off the main switch and unplug the power cord. Then, ask us for repair.

○ Failure to do so could result in fire, electric shock, and/or failure.

- When replacing carbon brushes or others, pull out the power cord.

○ Failure to do so could result in electric shock and/or failure.

## Contents

Introduction	
Safety Precautions	1 ~ 2
Contents	3
1. Confirmation of this product	3
2. Equipment Features	3
3. Specifications	3
4. Names of Each Component	5
5. Operating Procedure	5
5-1 Connecting to Powerpack	
5-2 Operation of Hand Switch	
5-3 Replacement of Belt(Belt Arm)	
6. Replacement of Carbon Brush (Curl Cord)	6
7. Replacement of Armpad(Pulley)	7
8. Accessories	8
9. Trouble Shooting	8
10. Maintenance and inspection	8

## 1. Confirmation of this product

Please make sure of standard equipments and accessories inside.

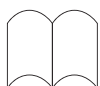


Carbonbrush 1set (2pieces)



KE-580

Operation Manual



Armpad BS1-273



Abrasive Belt #80 SA1011 W=6mm 1piece



fig-1

※The contents of the Mini Belt Sander accessories are subject to change without notice.

### 【Allowed Powerpack】

C2012/C2112/C2212 Only (Minimo One Series Ver.2 since 2013)  
Not available with all the other powerpacks

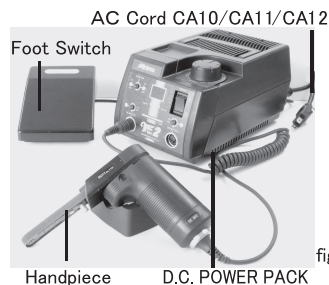


fig-2

Handpiece D.C. POWER PACK  
A handpiece is only included.  
Except the handpiece, please purchase individually.

## 2. Equipment Features

- **Hand Switch**  
The hand switch enables quick start/stop operation.  
This is very useful if you often make the start/stop operation and/or you work away from the powerpack
- **Mounting Handpiece Identification Resistor**  
The handpiece mounts a handpiece identification resistor corresponded to the handpiece identification function on Minimo One Series Ver.2 powerpacks.  
This function optimally controls rotation speed and torque of the handpiece.
- **Exchangeable Belt Arm**  
You can choose and easily install a belt arm according to your purpose.(H81, which is a thin belt arm is separately sold.)
- **Curl Cord**  
As the curl cord is elastic, it does not interrupt your work.

## 3. Specifications

fig-3. System configuration table

POWER PACK	Motor				Head							Clamp Head			Joint			
					H011	H021	H031	H041	H051	H211	H221	H231	H311	MX52	MX53	FX91	ET51	MG03
	One Series	Ver.2	Type	Max Speed [min <sup>-1</sup> ]	Standard	Slender	Heavy Duty	Long Slender	Air	Standard	Heavy Duty	Variable amplitude type	Standard	Heavy Duty	Clamp	Reduction Ratio Gear		
C2012 C2112 C2212	KV11H	KV112H	Ultrahigh	30,000	○	○			○				○					
	KV21H	KV212H	High	40,000	○	○		○	○				○					
	KM11H	KM112H		35,000	○	○		○	○				○			○		
	KM21H	KM212H		30,000	○	○	○	○					○	○	○	○	○	
	KV21	KV212	Medium	25,000	○	○											○	○
	KM11	KM112		20,000	○	○							○	○	○	○	○	
	KM21	KM212	Low	15,000	○	○	○	○		○	○		○	○	○	○	○	○
	KM21L	KM212L		8,000	○	○	○	○		○	○	○	○	○	○	○	○	○
	KM11G	KM112G		Low gear	6,600	○	○	○	○		○	○	○	○	○	○	○	○

○ is possible combinations of Head joint

C2012 C2112 C2212	One Series	Ver.2	Type	Belt Speed (m/min)	Max. Feed (mm/min)
	RE11	RE112	Reciproc	—	3,500
	RE21	RE212	Sing. File	—	7,000
	BS31	BS312	Belt Sander	700	—

- Over load function when the motor is locked ▪ Danger avoidance function  
The overload function will operate if its collet chuck opens or the load is stable.
  - Usual overload.
    - Opened collet chuck. ⇒ Switch ON ⇒ Overload caution. (5 sec) ⇒ Overload(Stop)
  - Over load in case that its collet chuck opens.
    - Opened collet chuck. ⇒ Switch ON ⇒ 15 sec ⇒ Overload caution. (5 sec) ⇒ Overload(Stop)
  - Trouble shooting in case that the danger avoidance function operates under constant load.
    - A constant load process(15 sec). ⇒ Overload caution. ⇒ Set to no-load condition within 5 seconds. ⇒ Danger avoidance function is reset.
- ※The time by the caution and the load displacement can be changed. Please ask to Minitor for changing.

## 4. Names of Each Component

- ① RUBBER BEARING
- ② ARMPAD
- ③ SCREW
- ④ KNOB
- ⑤ BODY
- ⑥ DRIVING PULLEY
- ⑦ DUST COVER
- ⑧ SCREW
- ⑨ HAND SWITCH
- ⑩ HANDGRIP
- ⑪ CURLED CORD
- ⑫ GRIP NUT
- ⑬ Screw for grounding

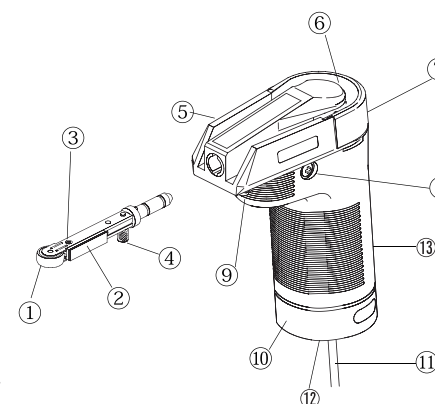


fig-4

## 5 Operating Procedure

### 5-1. Connecting to Powerpack

Connect the curl cord properly with the powerpack.

Minimo One Series Ver.2 handpieces cannot be connected with the previous version powerpack including

### 5-2. Operation of Hand Switch

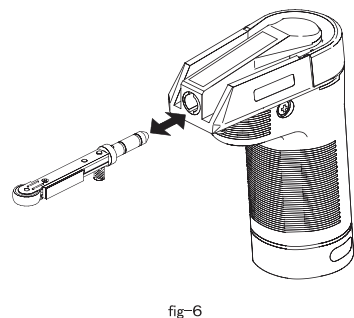
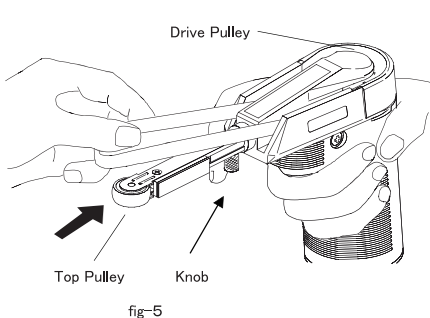
The hand switch is for selection of the station to use and start/stop operation

When a station is not selected		
When a station is selected		
	Operation	Movement
①	- Press the hand switch.	The DC Motor output light is on.
②	① Press the hand switch.	The motor starts to run.
③	② Press the hand switch.	The motor stops.

**Caution** ■ When changing Sentan Tools, do not press the hand switch.

### 5-3. Replacement of Belt(Belt Arm)

Replacement of Belt Arm		
Replacement of Belt		
①	① Pull the curl cord out of the powerpack.	-
②	② Hook the belt around the drive pulley then, Squeeze the knob.	☒ -5
③	③ Hook the other side of the belt around the top pulley.	☒ -5
④	- As dismounting the belt, Just pull straight out the beltarm.	☒ -6
⑤	- Insert the new one. (Be sure not to be upside down.)	☒ -6
⑥	④ Squeeze the knob and lift the belt up to unhook it.	-



**Caution** ■ After replacing the carbon brushes, give the handpiece a trial run, increasing rotation speed gradually and make sure how it works.  
■ Pull the curl cord out of the control pack.

## 6. Replacement of Carbon Brush (Curl Cord)

Procedure of replacement of carbon brushes		
Procedure of replacement of a curl cord		
①	① Pull the curl cord out of the powerpack.	-
②	② Remove the grip nut with a spanner (21mm).	fig-7
③	③ Pull the curl cord connector out of the main body. Hold the resin part of the curl cord and pull out straight.	fig-8
④	④ Remove the screw for grounding from the grip.	-
⑤	⑤ Remove the screw fixing the grip and take off the grip.	-
⑥	- Remove the screws fixing the carbon brushes and pull out the carbon brushes.	fig-9
⑦	- Set new carbon brushes as they were and tighten them with the screws.	-
⑧	⑥ Put the grip in and tighten with the screw. (Put the grip in while caring the hand switch cord.)	-
⑨	⑦ Fit the curl cord socket with the pins on the main body and insert on the straight. (If you replace the curl cord, do so at this time.)	fig-10
⑩	⑧ Tighten the grip nut with the spanner.	-



fig-7



fig-8

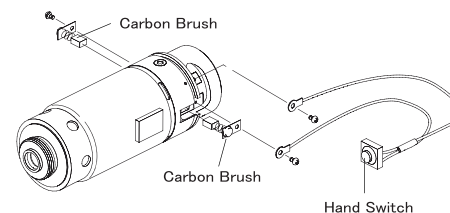


fig-9

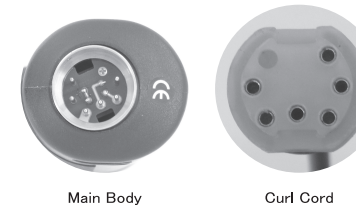


fig-10

**Caution** ■ Use equivalent carbon brushes.  
■ After replacing the carbon brushes, give the handpiece a trial run, increasing rotation speed gradually and make sure how it works.  
■ When replacing carbon brushes, pull the curl cord out of the control pack.

## 7. Replacement of Armpad(Pulley)

### <Replacement of Armpad>

The Armpad is exchangeable. Just peel out the old one and paste the new one on the arm. Armpad is adhesive on the back. Peel off the covered tape to paste it. (fig-1 1)

Refer to expendable supplies below to order the parts.

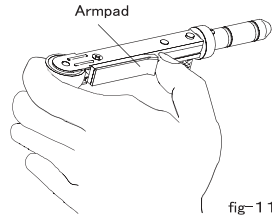


fig-11

### <Replacement of Pulley>

The pulley has ballbearing in it. When it comes to rotate not smoothly, It is the time to replace it. Refer to Expendable supplies below to order the parts.

#### 1. For H82(Rubber bearing for pulley)

Take out the screw ① at the top of the arm and pull the pulley shaft ⑤ down. Then, the rubber bearing ④ can be taken out.

To amount the rubber bearing, sandwich the rubber bearing between the spacers ③. Then, place them into the top of the beltarm.

Finally, insert the pulley shaft from the bottom and tighten the screw ① with the washer ②. (fig-1 2)

#### 2. H81

First, loosen the screw on the beltarm and widen the top and bottom plates. Then, take out the pulley and insert the new one. (fig-1 3)

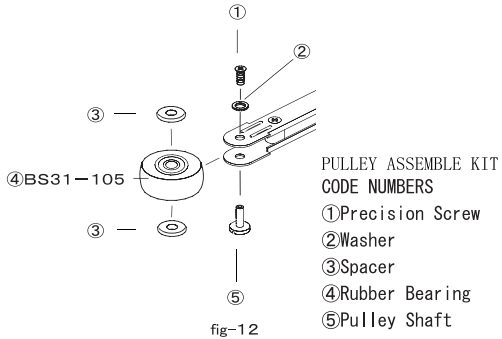


fig-12

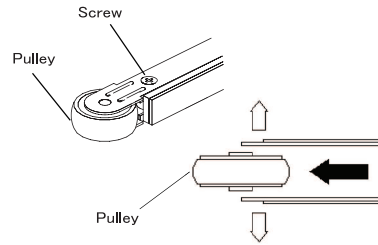


fig-13

## 8. Accessories

Rubber Cradle  
RM11



Carbonbrush 1set (2pieces)  
KE-580



Dust Protective Cover  
BS1-277G



Standard Belt Arm  
H82



Thin Belt Arm  
H81



Armpad  
(For H82)  
BS1-273



Armpad  
(For H81)  
BS1-272



Rubber Bearing  
(For H82)  
BS31-105



Pulley  
(For H81)  
BS1-130



Pulley Assemble Kit  
(For H82)  
BS31-140



## 9. Trouble Shooting

Condition	Investigation	Corrective action
Motor does not run.	Is an AC cord unplugged?	Please plug an AC cord.
	Is a fuse blown?	Please replace e equivalent fuse.
	Are the carbon brushes worn away?	Replace carbon brushes.
Hand switch does not work.	Is a foot switch connected with the powerpack?	While a foot switch is connected with the powerpack, the start/stop operation is done only by the foot switch.
Motor is overheated while running.	Do you use the handpiece with excessive loads?	Use the handpiece within the green lights of the load meter on the powerpack.
Unusual noise and/or vibration occurs.	Make sure if the noise and/or vibration occurs when the handpiece runs in slow rotation speed.	Ask us for repair.

※If the symptom is not improved after corrective action, the handpiece might be defective. Please ask for repair.

※Any other troubles or obscure points, please contact our minitor dealer.

## 10. Maintenance and inspection

●Please check if there is some damage or not on the case and cord.

●The chips and dust may collect around the drive pulley. Take the dust cover and clean it by airblow or vacuum out.

※Please maintain and inspect a handpiece.

Warning Neglecting maintenance and inspection ,could result in accident and/or failure.